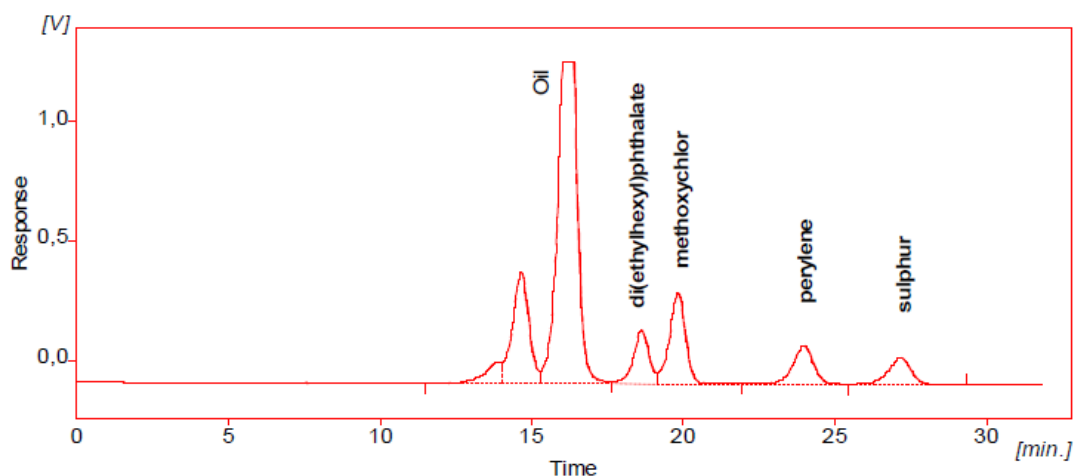


Gel permeation clean-up column

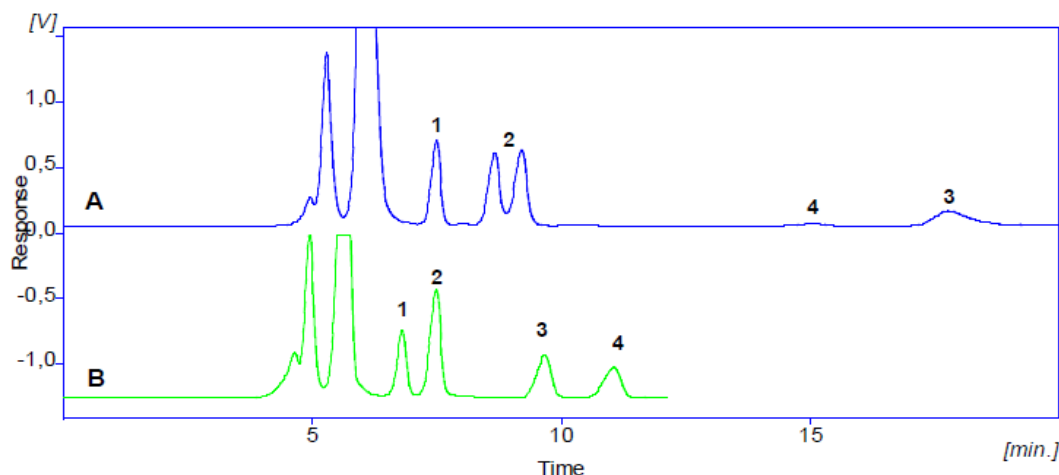
WATREX 250x16 mm PAH-prep 10 µm

EPA Test mix in dichlormethane



2 columns 250x16 mm PAH-Prep 10 mm in series, flow rate 3 ml/min, 2 ml of test mix (according to EPA 3640A) 25 g/l oil, 1 g/l bis(2-ethylhexylphthalate), 0,2 g/l methoxychlor, 0,02 mg/l perylene, 0,08 g/l sulfur, detection UV254 nm (short pathlength cell).

Effect of eluent on selectivity



250x16 mm PAH-Prep 10 µm, flow rate 3,5 ml/min, 100 µl of test mix, detection UV254 nm, eluent line A cyclohexane-ethylacetat 1:1, line B dichlormethan. Peaks: 1 (bis(2-ethylhexylphthalate)), 2 methoxychlor, 3 perylene, 4 sulphur. In the cyclohexane-ethylacetate eluent some interactions occur beside size exclusion, causing increased retention especially of PAH (perylene elutes after sulphur)